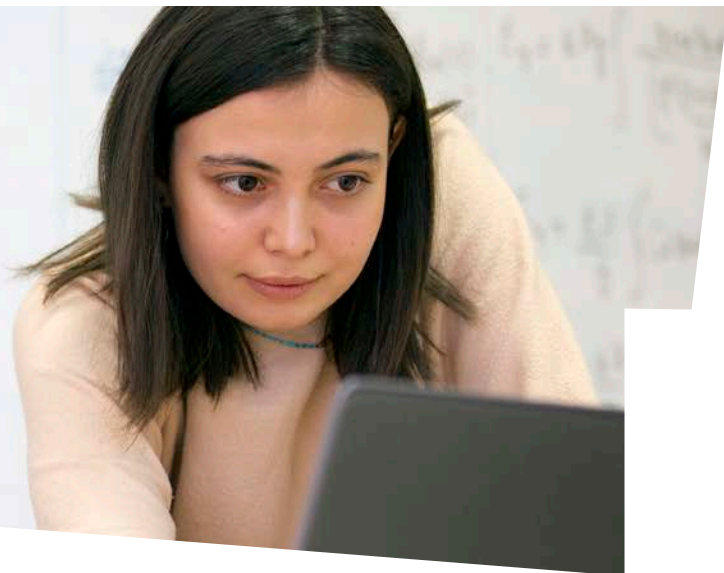


GET STARTED ON AN IN-DEMAND CAREER.



MATHEMATICS CONCENTRATION

Associate of Science

JOB OPPORTUNITIES FOR GRADUATES

Students pursuing this degree may have an interest in mathematics, data science, education, statistics, engineering or research and work in fields ranging from government to education to business to the tech sector.

TRANSFER OPTIONS

This concentration prepares students for transfer to a four-year college or university to pursue a bachelor's degree in mathematics, engineering, or another related field. Students with this background also may pursue bachelor's degrees leading to employment in the following areas: education, technology, business or industry.

SALARY

Salary will vary depending upon the employment area and completion of a baccalaureate degree.

LOCATION

Toledo-area Campus

REQUIRED COURSES

1ST SEMESTER

ENG 111	Composition I *	Credits: 3(Lec: 3)
or		
ENG 111P	Composition I Plus *	Credits: 4(Lec: 4)
MTH 180	Calculus I *	Credits: 5(Lec: 5)
STM 105	Technology in Society	Credits: 2(Lec: 2)
_____	Social and Behavioral Sciences Elective	Credits: 3(Lec: 3)
_____	Art and Humanities Elective	Credits: 3(Lec: 3)

2ND SEMESTER

ENG 112	Composition II *	Credits: 3(Lec: 3)
or		
HON 201	Interpretations Seminar *	Credits: 3(Lec: 3)
MTH 232	Calculus II *	Credits: 5(Lec: 5)
_____	Social and Behavioral Sciences Elective	Credits: 3(Lec: 3)
_____	Art and Humanities Elective	Credits: 3(Lec: 3)
_____	Arts and Science Course Electives	Credits: 3 to 4(Lec: 3 to 4 Lab: 0 to 3)

3RD SEMESTER

MTH 233	Calculus III *	Credits: 4(Lec: 4)
_____	General Arts and Sciences Elective	Credits: 3 to 4(Lec: 3 to 4 Lab: 0 to 3)
_____	General Arts and Sciences Elective	Credits: 3 to 4(Lec: 3 to 4 Lab: 0 to 3)
_____	Ohio Transfer Module (OTM) Elective	Credits: 3 (Lec: 3)
PHY 221	Calculus Based Physics I *	Credits: 5(Lec: 4 Lab: 3)
or		
_____	Science Elective	Credits: 3 to 4(Lec: 3 to 4 Lab: 0 to 3)

*Select any *Ohio Transfer Module Science Elective

4TH SEMESTER

MTH 234	Differential Equations *	Credits: 3(Lec: 3)
MTH 235	Linear Algebra *	Credits: 3(Lec: 3)
_____	General Arts and Sciences Elective	Credits: 3 to 4(Lec: 3 to 4 Lab: 0 to 3)
PHY 222	Calculus Based Physics II *	Credits: 5(Lec: 4 Lab: 3)
or		
_____	Lab Science Elective	Credits: 4 to 5(Lec: 3 to 4 Lab: 0 to 3)

*Select any *Ohio Transfer Module Science Elective. Course must have laboratory component.

*Ohio Transfer Module Course

More information about the Ohio Transfer Module Course can be found at www.ohiohighered.org/transfer/transfermodule

OWENS.EDU

Office of Admissions

Toledo-area Campus - (567) 661-7777
Findlay-area Campus - (567) 429-3509

School of Science, Technology, Engineering and Mathematics

(567) 661-7451



OWENS
COMMUNITY COLLEGE