



GET STARTED ON AN IN-DEMAND CAREER.

COMPUTER NETWORKING & SYSTEMS ADMINISTRATION PROGRAM

Associate of Applied Science

The Associate of Applied Science in the Computer Networking & Systems Administration program is designed to provide students a powerful combination of career and continuing education options to foster skills as IT Network professionals and for quick entry into this fast-growing profession. Students earning this degree will be able to perform such tasks as systems integration, network design, network installation and troubleshooting, network security and IT project management. Valuable skills in business continuity planning, network security implementation and oversight, network efficiencies, listening skills, customer service, problem-solving, analytical thinking and technical writing will be gained.

Network and PC Support is a growing area which provides a combination of career and continuing education options. This degree program includes 5 industry certifications students can earn and provides preparation for additional certificates for quick entry into the field of computer networking. Some of the industry certificates include the IT Fundamentals Pro, PC Pro, Network Pro, Linux Pro and Security Pro with preparation for the CompTIA series of industry certifications.

JOB OPPORTUNITIES FOR GRADUATES

Career pathways include Network Administration Support Specialist, Computer Support Specialist, PC Technician and Help Desk Analyst.

Work in this profession includes analyzing, testing, troubleshooting and evaluating existing network systems, such as local area networks (LAN), wide area networks (WAN), cloud networks, servers and other data communications networks. Work in this profession also includes performing network maintenance to ensure networks operate correctly with minimal interruption.

EARLY IT PROGRAM

Students at participating high schools and career centers may complete one year at no cost in an Owens' CIS degree program while still in high school through the Early IT Program. They will gain direct admission to Owens and the University of Cincinnati upon graduation. Students completing the program may transfer seamlessly to the University of Cincinnati and remain at Owens to complete their bachelor's and master's degrees in IT through the University of Cincinnati.

SALARY

The US Bureau of Labor Statistics lists the median annual wage for network and computer systems administrators at \$80,600 in May 2021 and the median annual wage for computer network support specialists at \$62,760 in May 2021. According to the U.S. Bureau of Labor Statistics, employment in computer and information technology occupations is projected to grow 11% from 2019 to 2029, much faster than the average growth rate for all other occupations.

ACCREDITATION

This program is accredited by the Association of Technology, Management, and Applied Engineering (ATMAE).



JOB OUTLOOK

Employment of network and computer systems administrators is projected to grow 5 percent from 2020 to 2030. About 24,900 openings for network and computer systems administrators are projected each year, on average, over the decade.

OTHER PROGRAM INFORMATION

Many courses in this degree may require students to take online courses.

The Computer Information Systems (CIS) Department works closely with local businesses and organizations to secure internships and employment opportunities for students, and to ensure program courses are relevant with the latest technologies and current business practices. Students also have the option to complete a co-op work experience.

OWENS.EDU

Office of Admissions

Toledo-area Campus (567) 661-7777
Findlay-area Campus (567) 429-3509

School of Science, Technology, Engineering and Mathematics

(567) 661-7501

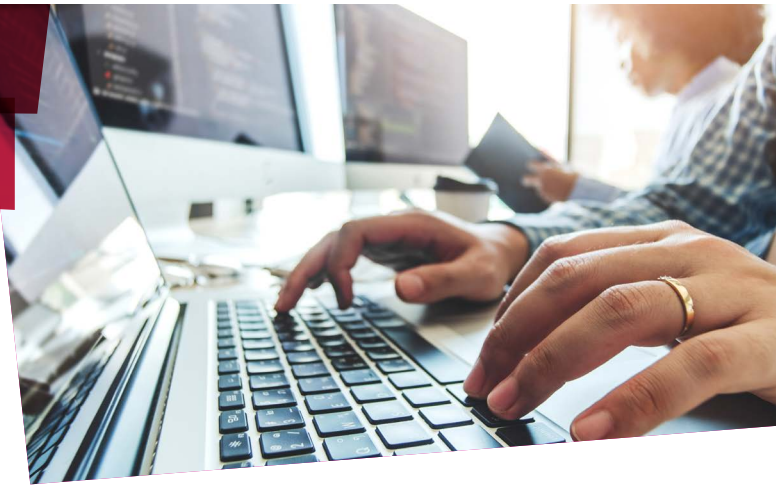


OWENS
COMMUNITY COLLEGE

PROGRAM CURRICULUM

COMPUTER NETWORKING & SYSTEMS ADMINISTRATION PROGRAM

Associate of Applied Science



REQUIRED COURSES

*The Age of Coursework for Information Systems Technology (IST) courses is 5 years - chair approval required for courses beyond that. Please refer to College Policy, Chapter 2 - Academic, 3358:11-2-22 Age of Coursework Policy..

1ST SEMESTER

STM 105	Technology in Society	Credits: 2(Lec: 2)
IST 265	Introduction to Java	Credits: 4(Lec: 4)
IST 101	IT Fundamentals	Credits: 3(Lec: 3)
IST 131	Computer Concepts and Apps	Credits: 3(Lec: 3)
IST 133	Troubleshooting Apps & H'ware	Credits: 3(Lec: 3)
BUS 120	Principles of Management	Credits: 3(Lec:3)
MTH 133	Quantitative Reasoning *	Credits: 3(Lec: 3 Lab: 1)
or		
MTH 213	Introductory Statistics *	Credits: 3(Lec: 3)
or		
MTH 213P	Introductory Statistics Plus	Credits: 4(Lec: 4)

2ND SEMESTER

ENG 111	Composition I *	Credits: 3(Lec: 3)
or		
ENG 111P	Composition I Plus *	Credits: 4(Lec: 4)
_____	Science Elective	Credits: 3 to 4(Lec: 3 to 4 Lab: 0 to 3)
	<i>*Must choose an Ohio Transfer Module course in Biology, Chemistry, Geology or Physics for University of Cincinnati transfer</i>	
IST 133	Computer Hardware and Operating System	Credits: 3(Lec:3)
IST 175	Networking Technologies	Credits: 3(Lec: 3)
IST 268	Web Based Tech Support & Doc	Credits: 3(Lec: 3)

3RD SEMESTER

GPH 220	Intro to Geograph Info Sys-GIS	Credits: 3(Lec: 3)
IST 240	Microsoft Net Admin I	Credits: 3(Lec: 3)
_____	Speech Elective	Credits: 3(Lec: 3)
	<i>*Must choose SPE 102 for University of Cincinnati transfer</i>	
IST 124	Internet Research Basics	Credits: 1(Lec: 1)
IST 241	Linux Essentials	Credits: 3(Lec: 3)
ENG 130	Intro to Technical Comm	Credits: 3(Lec: 3)

4TH SEMESTER

IST 205	Advanced Networking Technology	Credits: 3(Lec: 3)
SOC 220	Multicultural Diversity in US *	Credits: 3(Lec: 3)
IST 144	Intro Database Design & SQL	Credits: 3(Lec: 3)
IST 181	Intro to Network Security	Credits: 3(Lec: 3)
IST 289	IT Project Management	Credits: 3(Lec: 3)
or		
IST 293	Info Systems Coop Wk Exp	Credits: 3(Lec: 1 Other: 20)

*Ohio Transfer Module Course

More information about the Ohio Transfer Module Course can be found at www.ohiohighered.org/transfer/transfermodule

OWENS.EDU

Office of Admissions

Toledo-area Campus (567) 661-7777
Findlay-area Campus (567) 429-3509

School of Science, Technology, Engineering and Mathematics

(567) 661-7501



OWENS
COMMUNITY COLLEGE

Your success starts here.