

GET STARTED ON AN IN-DEMAND CAREER.



ASL INTERPRETER PREPARATION PROGRAM

Associate of Applied Science

The American Sign Language (ASL) Interpreter Preparation Program will prepare students to interpret between people who are hard of hearing or deaf and hearing individuals in such areas as education, work environments, video phone and performance interpreting!

With a solid foundation in interpreting basics, students will be prepared for internships or entry-level ASL interpreting positions. Additionally, students will be well-prepared to continue their training in more complex interpreting such as medical and legal interpreting.

The program includes:

- Extensive course work in both ASL and the ASL Interpreting Profession
- Hands-on opportunities through the language lab to practice their skills
- Real-world experience interpreting in the deaf community through a practicum

Admission to this program begins with the ASL Certificate. Students will gain proficiency in ASL through the certificate before admission to the Interpreter program. All ASL courses are incorporated into the Interpreter Program and students earn the ASL certificate as part of the degree.

**In order to complete the program students must 1) earn a C or better in all ASL and Interpreter courses before moving to the next level of courses,* 2) complete a practicum in the last semester of the program and 3) as part of the program, participate in activities with the deaf community outside of class.*

JOB OPPORTUNITIES

American Sign Language Interpreter in the following environments:

- Classroom interpreting (K-12 and beyond)
- Professional development
- Job Training
- Conferences
- Video phone interpreting
- Cruises
- Concerts

ASL Interpreting is an in-demand career with nationwide job mobility.

LOCATION

Toledo-area Campus
Online

SALARY INFORMATION

An American Sign Language Interpreter can make \$35,000 to \$110,000 annually.

Source: www.careerexplorer.com/careers/american-sign-language-interpreter

OWENS.EDU

Office of Admissions

Toledo-area Campus - (567) 661-7777
Findlay-area Campus - (567) 429-3509

Teacher Education and Human Services Department

(567) 661-2561

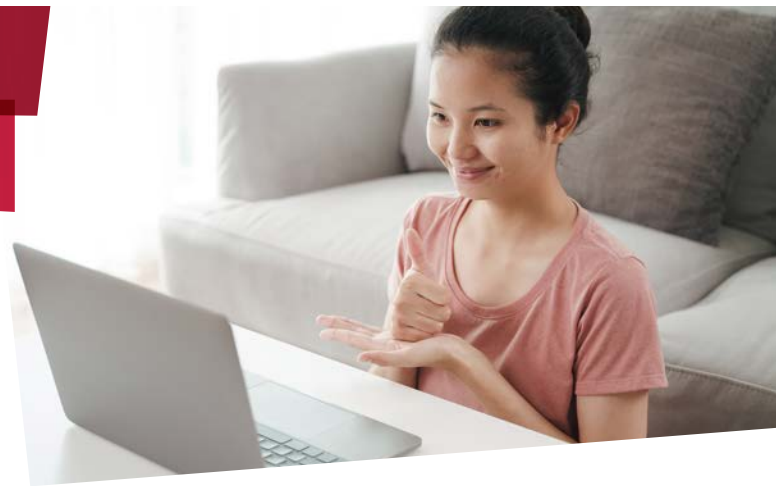


OWENS
COMMUNITY COLLEGE

PROGRAM CURRICULUM

ASL INTERPRETER PREPARATION PROGRAM

Associate of Applied Science



REQUIRED COURSES

1ST SEMESTER

IDS 103	Prep for Education and Professions	Credits: 2(Lec: 2)
ITP 102	Intro to the ASL Interpreting Profession	Credits: 3(Lec: 3)
ENG 111	Composition I *	Credits: 3(Lec: 3)
or		
ENG 111P	Composition I Plus *	Credits: 4(Lec: 4)
ASL 211	Inter American Sign Language I	Credits: 4(Lec: 4)
MTH 133	Quantitative Reasoning *	Credits: 3(Lec: 3 Lab: 1)

2ND SEMESTER

ENG 112	Composition II *	Credits: 3(Lec: 3)
or		
HON 201	Interpretations Seminar *	Credits: 3(Lec: 3)
ITP 101	Orientation to Deaf Culture	Credits: 3(Lec: 3)
_____	Art and Humanities Elective	Credits: 3(Lec: 3)
	* Select a course from the Ohio Transfer Module (OTM)	
	* Humanities related course recommended.	
ASL 212	Int. American Sign Language II	Credits: 4(Lec: 4)
_____	Science Elective with Lab	Credits: 4 to 5(Lec: 4 to 5 Lab: 3)
	* Select a course from the Ohio Transfer Module (OTM) with a laboratory component	

3RD SEMESTER

ITP 103	Introduction to Transliterating	Credits: 3(Lec: 3)
ITP 201	Interpreting from Sign (ASL) to Voice (ENG)	Credits: 3(Lec: 3)
ITP 202	Interpreting from Voice (ENG) to Sign (ASL)	Credits: 3(Lec: 3)
ASL 113	Fingerspelling & Numerical Concepts	Credits: 3(Lec: 3)
SPE 101	Public Speaking *	Credits: 3(Lec: 3)

4TH SEMESTER

ITP 203	Legal and Ethical Considerations for ASL Interpreters	Credits: 3(Lec: 3)
ITP 204	ASL Interpreter Practicum	Credits: 3(Practicum: 3)
PSY 101	General Psychology *	Credits: 3(Lec: 3)
ITP 205	Specialized ASL Interpreting	Credits: 3(Lec: 3)
ASL 213	Receptive Skills in ASL	Credits: 2(Lec: 2)

*Ohio Transfer Module Course

More information about the Ohio Transfer Module Course can be found at www.ohiohighered.org/transfer/transfermodule

OWENS.EDU

Office of Admissions

Toledo-area Campus - (567) 661-7777
Findlay-area Campus - (567) 429-3509

Teacher Education and Human Services Department

(567) 661-2561

Your *Success* Starts Here.



OWENS
COMMUNITY COLLEGE