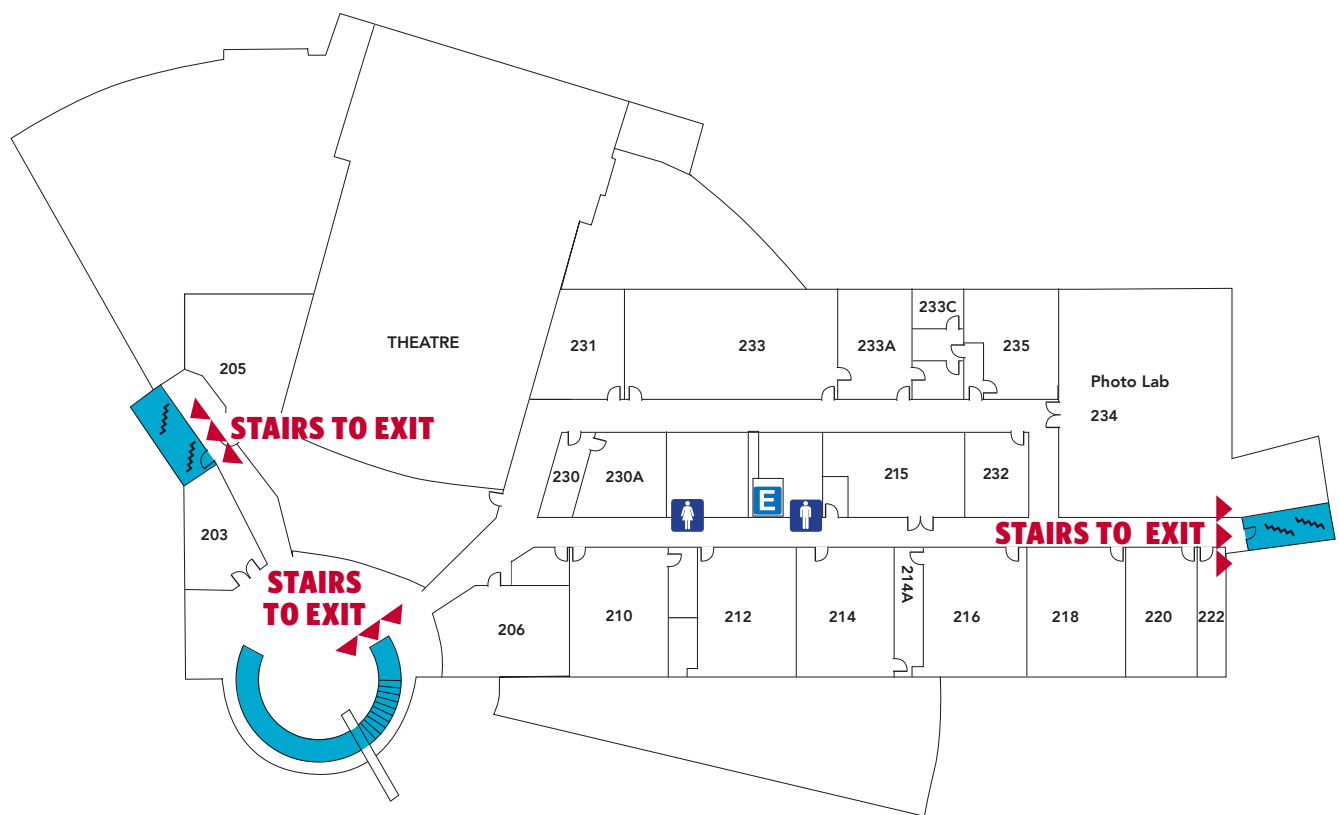


EVACUATION MAP



USE STAIRS TO FIRST FLOOR

Center for Fine and Performing Arts Second Floor



STAY SAFE - FOLLOW THESE TIPS:

- Leave the building through the nearest exit.
- In case of fire: do NOT use the elevator - use STAIRS.
- Do NOT return until the "all clear" message has been given.



R. 02/2022

FOR EMERGENCIES DIAL 9-1-1

To contact the Department of Public Safety (DPS) call extension 7-5-7-5 from any campus phone or call (567) 661-7575 24 hours a day/7 days a week/365 days a year